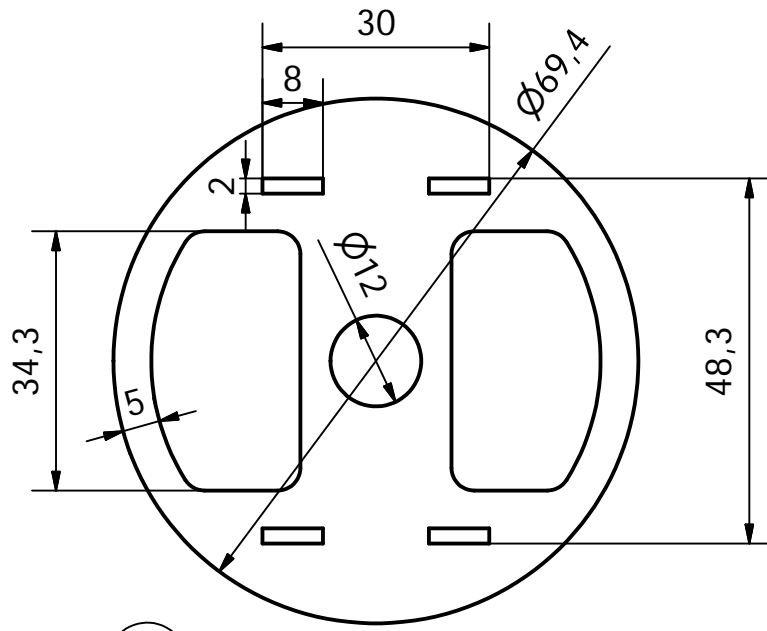
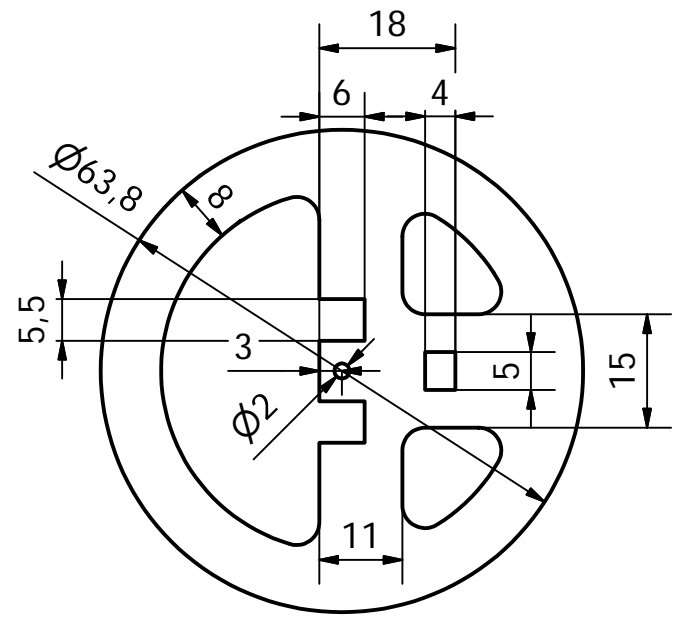


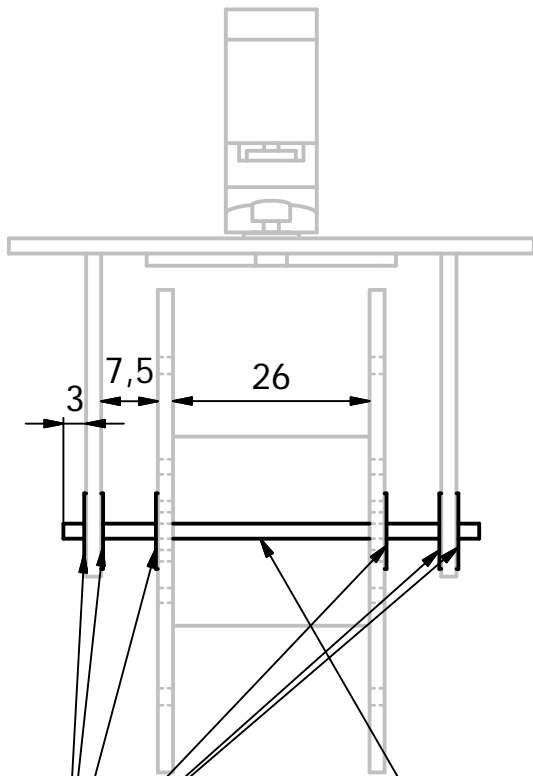
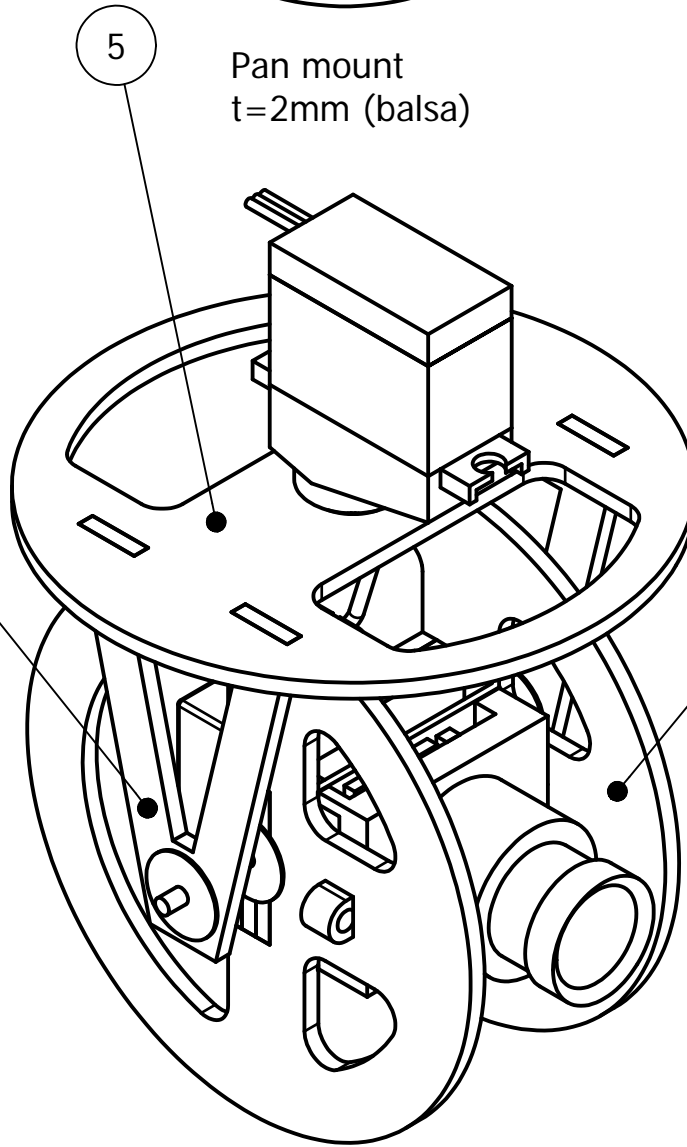
Tilt frame (x2)
t=2mm (balsa)



Pan mount
t=2mm (balsa)

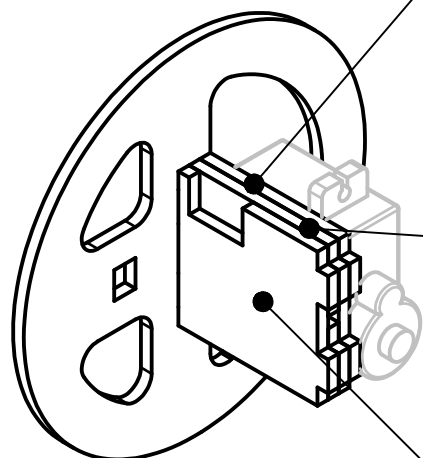


Tilt cylinder (x2)
t=2mm (balsa)



Axle shims/stoppers
(aluminium/plastic)

Tilt axle $\varnothing 2$ mm
(steel/aluminium/plastic)



Camera & servo mount
t=2mm (balsa)

